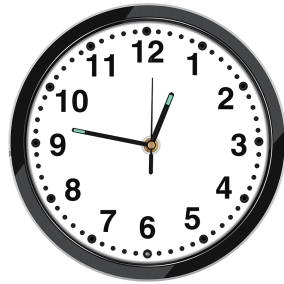
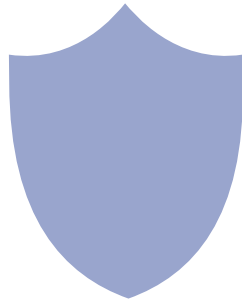
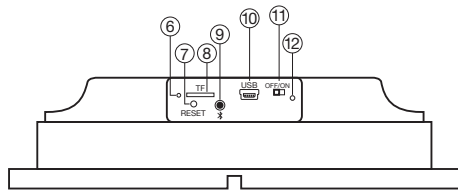


HD 1080P Security Wi-Fi Camera

User Manual
Version: May, 2020




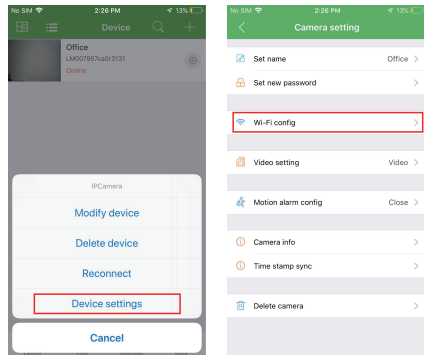
1



- ⑥ Speaker indicator
- ⑦ Reset for Wi-Fi camera
- ⑧ TF/Micro SD card slot
- ⑨ On/Off for speaker
- ⑩ Charging port
- ⑪ On/Off for Wi-Fi camera
- ⑫ Indicator for Wi-Fi camera

4

3. Press the gear icon  after the camera and select Device settings, select Wi-Fi Config.



8

Stereo speaker function:

- Turn on speaker:
Short press back bluetooth button ⑨ to turn on, it will say "DingDong"
- Pair with smart phone:
Phone setting=>Bluetooth=>find signal BT=>click to connect;
- Turn off speaker:
Short press back bluetooth button ⑨ to turn off speaker;
- Disconnect bluetooth:
Phone setting=>Bluetooth=>find signal BT=>click to disconnect;
- Automatically be off:
a. Speaker is not paired with phone in 5 minutes after turned On;
b. There's no paired phone in speaker's receiving range with in 5 minutes;
c. Speaker's battery less than 5%.

Common fault solution:

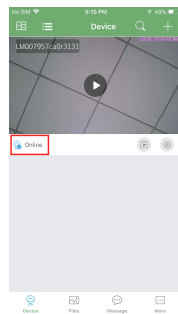
- Cannot connect to the speaker
> Delete BT from the phone's Bluetooth pairing list, and search BT again;
- Cannot search the speaker
> Turn off speaker, and turn on again when heard "DingDong", it will be found.

5

4. Select the router Wi-Fi and input password, camera will be connected to the router Wi-Fi. The smartphone will disconnect the signal from device and connect to the router Wi-Fi.

5. Quit APP, and device restart automatically and ready again in 30 seconds.

6. Enter APP and check live video locally or remotely anywhere.



9

Overview:

This security Wi-Fi camera kit is equipped with a powerful 1080p smart Wi-Fi camera for live streaming video, and it comes with motion detection video recording and alarm.

Mini design and easy hidden to DIY any kinds of unique and exclusive security cameras for home & business surveillance.

Usages: Nanny camera, home/ shop/ office/ warehouse surveillance camera.....

Warning: " illegal use is not allowed! Or, there will be consequences to bear! "

In the box:

- 1 x Wall clock Wi-Fi camera
- 1 x AC power adapter
- 1 x Hook rack
- 1 x USB cable
- 1 x User manual
- 1 x Micro SD card reader

2

Getting started of Wi-Fi camera part

Step1: Download and install APP

Search and download free APP named "HDSmartIPC" in Apple APP store, Google play or Electronic market, and install it.




Step 2: Plug in power and turn switch to ON, wait for 1 minute;

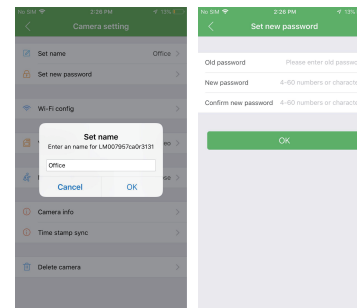
Step 3: Connect WiFi

6

Set camera name and private code

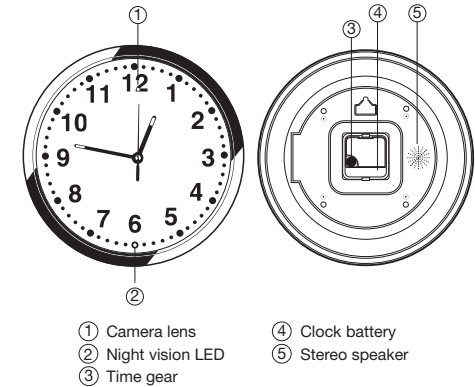
Set name: Press the  after the camera and select Device settings, select Set name, insert name like Office, Room.....

Set new password: Press the  after the camera and select Device settings, select Set new password and change it to new one. Default one is 8888.




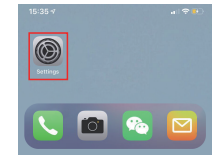
10

Product structure

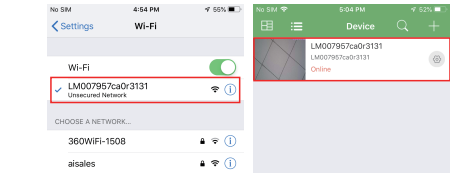


3

1. Open smartphone settings, search and connect the device's wireless signal named "AI/LM.....", wait Wi-Fi connected, and phone status bar appear Wi-Fi  symbol.



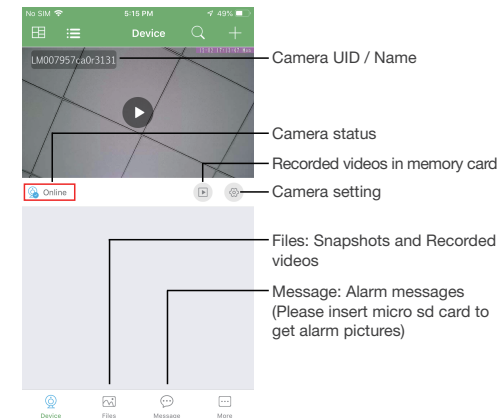
2. Enter APP, app will add just connected camera automatically, Camera Online then;



TIPS: This step = P2P mode, can check video locally when without Wi-Fi.

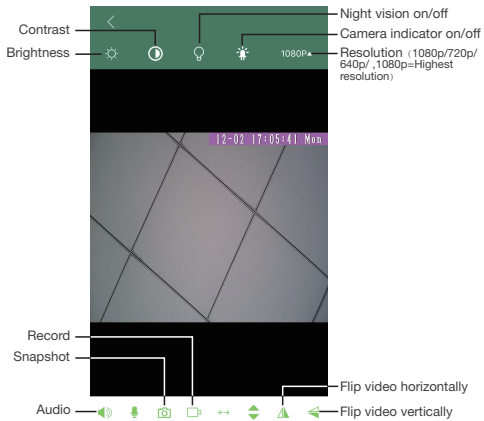
7

APP introduction:



11

Live video page - Click camera to check

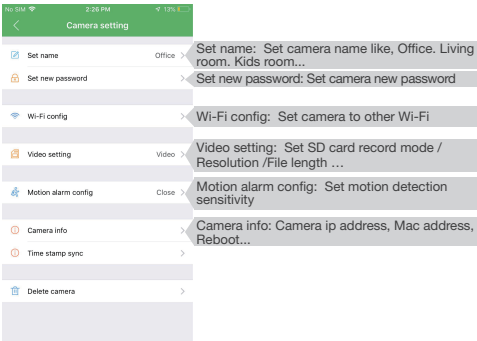


12

FAQ

1. Q: Can't get device Wi-Fi signal?
A: Press reset key for 10 seconds and wait 1 minute.
2. Q: Live video not smooth and clear?
A: Select suitable resolution according to the real time network environment.
3. Q: Motion detect set and alarm?
A: 1). Set motion detect sensitivity in Motion alarm config;
2). When motion detected, camera will push a alarm message to your phone and take one picture for checking in the APP [Page 11 - Message]. (A micro sd card MUST be inserted for saving alarm pictures)
4. Q: How to play micro SD card video?
A: 1). Use a card reader to read and play;
2). Use APP to play back [Page 11 - [Play]];
3). Play back in good speed network.

16



TIPS: Each setting in Device Settings, please scroll down and press ok to save the setting.

13

5. Q: Forget camera password, or item goes abnormal?
A: Turn on camera and wait for 1 minute, press reset key around 10 seconds till back indicators off to restore factory default. Camera restarts and get ready again in 1 minute.
6. Q: Any operation video demo of the camera for setting up?
A: Please contact local dealer for video guide.

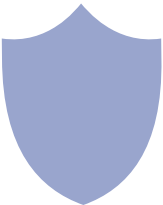
17

Set and watch by PC remotely (Windows Only)



Scan to download PC Client

14



The end!

Specification

Sensor	2.0 Mega pixel CMOS Lens
Video resolution	Max 1920*1080
Frames	Max 25fps
Compressed format	H.264
View angle	90°
Type of memory card	TF card>=Class 4/10 and HC marked
Maximum capacity of memory card	128GB
PC operation system	Windows 7, 8 / Mac OS X
Play software	VLCPlayer/SMPlayer
Mobile phone operation system	Android/iOS
Web browser	IE7 and above,chrome,firefox
Power consumption	400MA/3.7V
Recording	1 minute/ around 20MB
Working time	5-6 hours
Charging time	7-9 hours
Power adapter	5V / 2A

15