

Video Intercom

Products Solutions

Apartment solutions, Villa solutions, SIP 2.0

Galaxy[®]

www.galaxysecurityinc.com



CONTENTS



Overview

Product & Solution Review



Residential Community

Focus on residential and
apartment scenario



Villa

One-to-one intercom,
plug & play



SIP 2.0

SIP 2.0 release and VT delist

Product & Solution Review

IP Big Apartment System



IP Small Apartment System



IP Villa System



Analog Villa System



Product series: Apartment

Industry

End-user: Property developers
Scenario: Community

Product series: Villa system

S M B

End-user: Family
Scenario: Single house

Advantage of Apartment Solution

- **SIP Big Apartment System**, worked with DSS4004-S2 platform which cover community easily, fit for the large residential projects.
- **Small Apartment System**, worked with software management center and mobile DMSS, Flexible applies to small apartment.

Advantage of Villa Solution

- **IP Villa Kit**, improved the quality of the video and audio fit for the customer's demand as Cost-effective, strong competitiveness, Mobile APP.
- **Analog Villa Kit**, plug & play , easy installation by cat5e

/01

Residential Community Solution

System structure and highlights

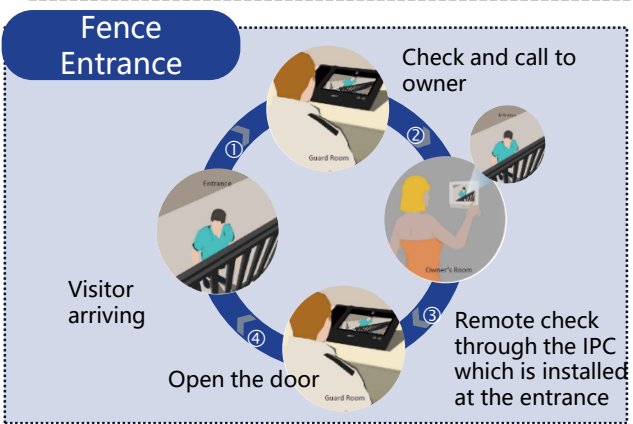
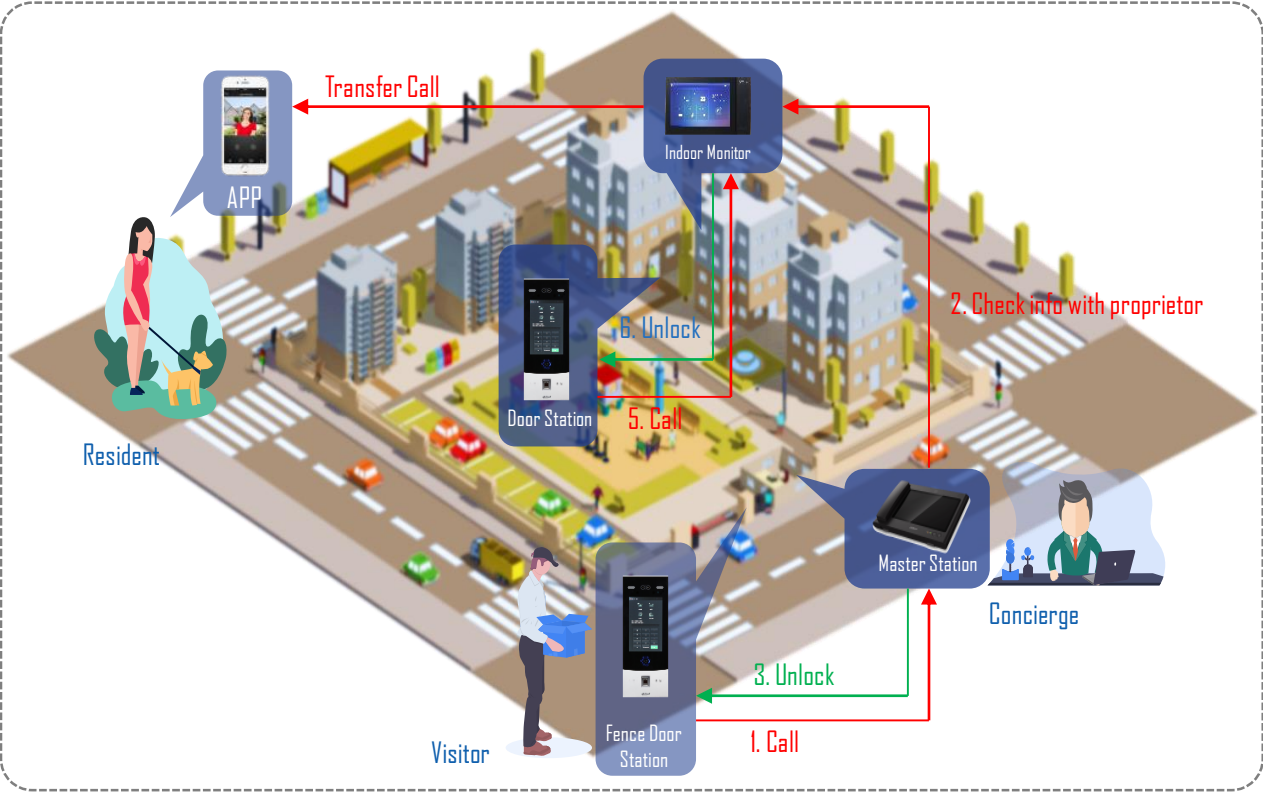


Community



Apartment

Residential Community Scenario



Scenario

An apartment or a residential usually need to manage access control and residents to improve safety, convenient and quality of life. In common area doors/gates, all people access by a visual controller. Manage center or resident home must know the details of the door so that all visitors are managed in safety way.

Roles in this scenario

Visitor

- Visitors call concierge through the Fence Door Station in the front of community
- Concierge check the visitor info with resident through the Master Station, then makes door release
- Visitor call the resident through the Unit Door Station in the front of the apartment, resident makes door release

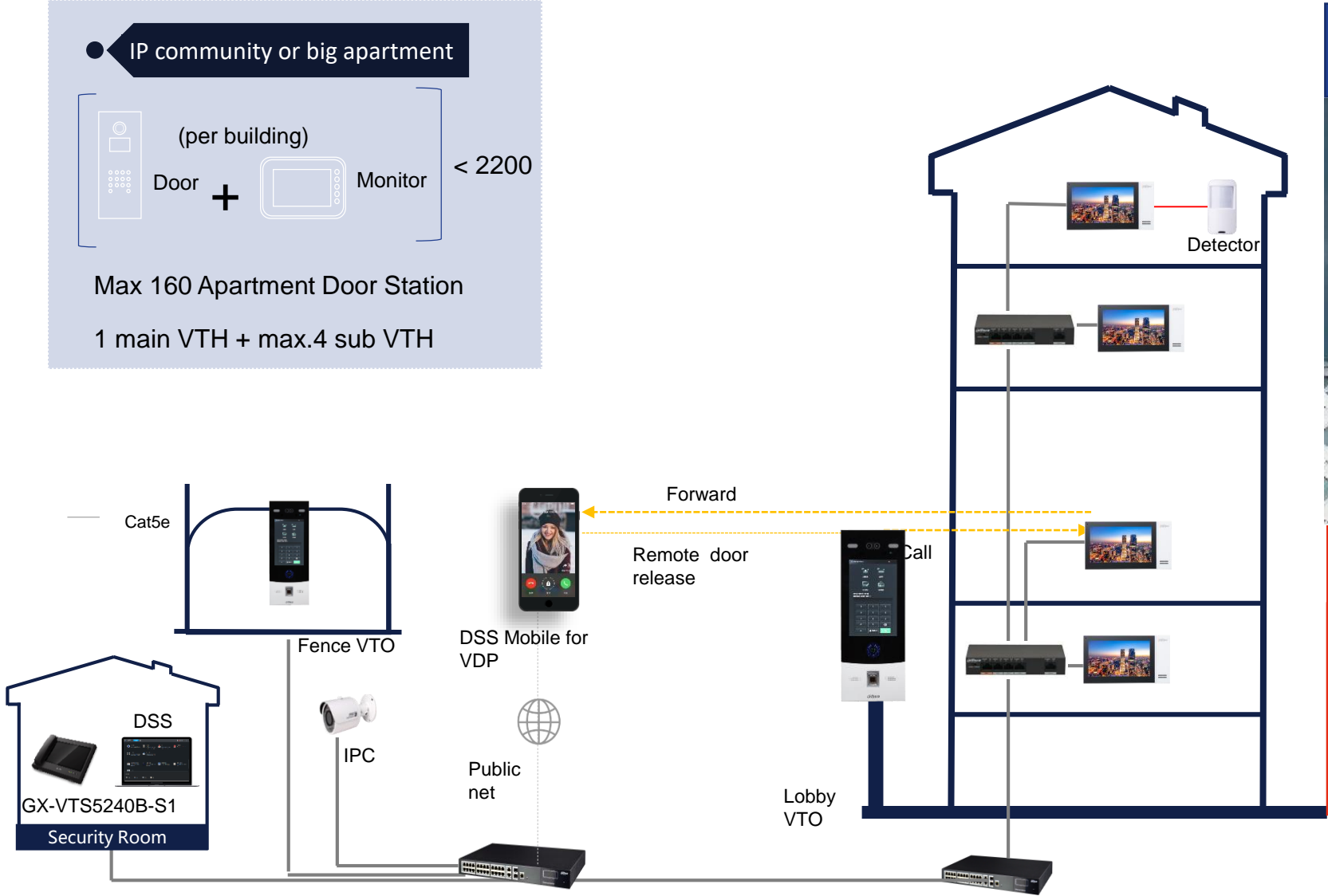
Resident

- Multiple ways to access: card, password, fingerprint, face and call security guard
- Receive the call and unlock via the Indoor Monitor and APP
- Mobile app: intercom, door release & alarm push
- Property service demand by calling Master Station

Concierge

- Visitors management
- Provide property service on time by two-way talk between Monitor and Station

Community Intercom System Architecture



More than 300 rooms big apartment



Platform recommended

- Use platform as the SIP server;
- SIP ID < 1100 → DSS4004-S2;
- SIP ID < 2200 → DSS7016-S2

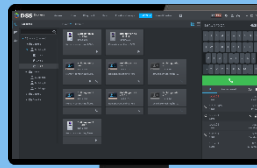
DSS Compact



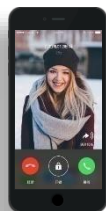
VTO



VTH



DSS



DSS Mobile
for VDP



VTS

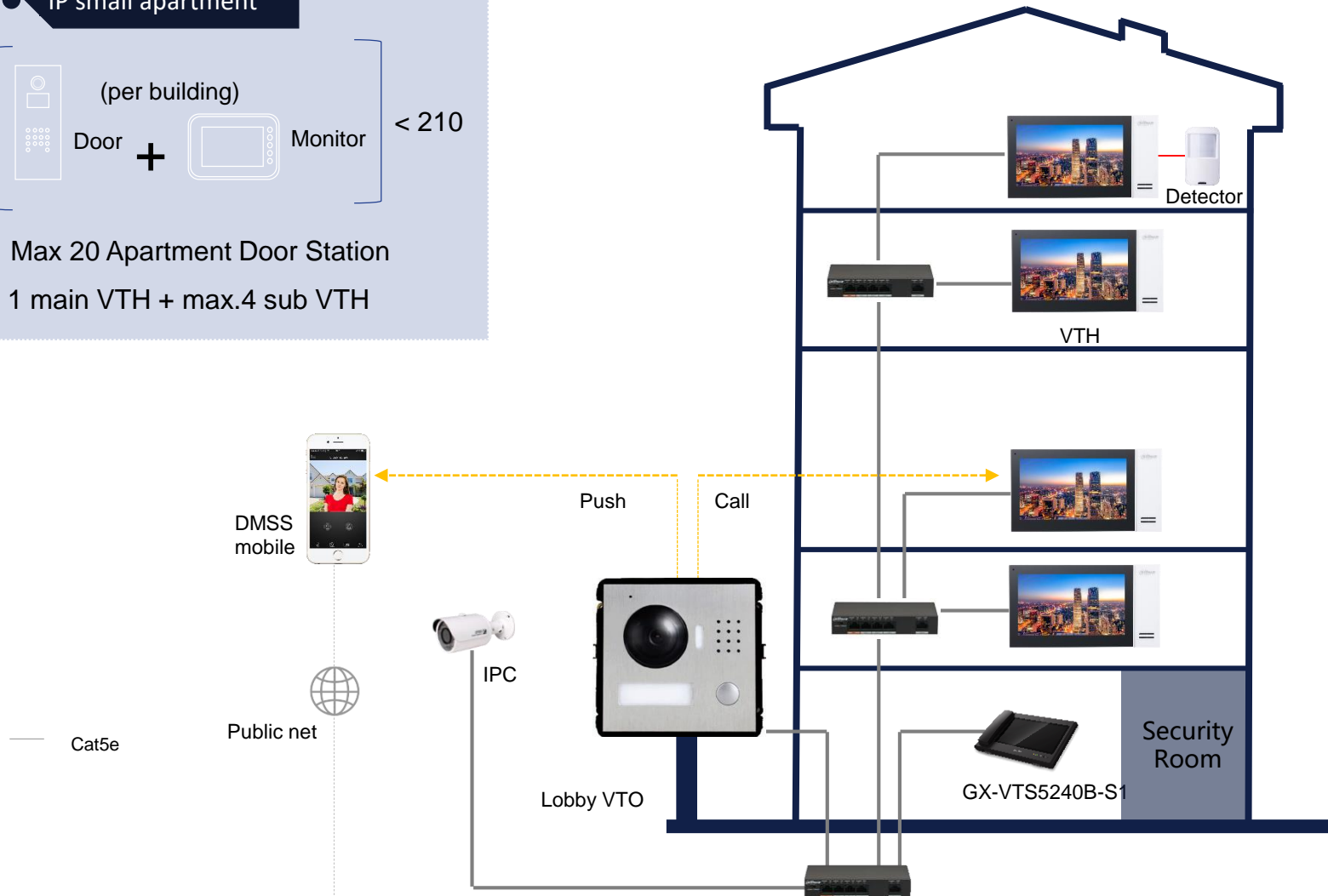
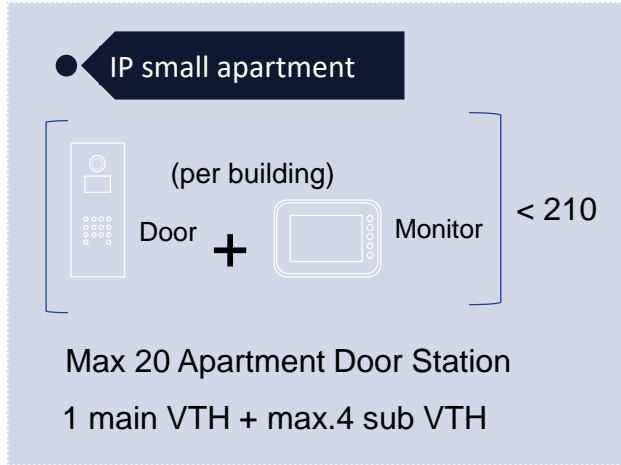
Management Center

- Unlock history and call history
- Release the txt information to VTH
- VTH alarm uploads and linkage
- Unlock door remotely

SIP Server

- All Video Door Phone products registered into the sever
- All terminal devices can video intercom with the server and each other.

Small Apartment Intercom Architecture



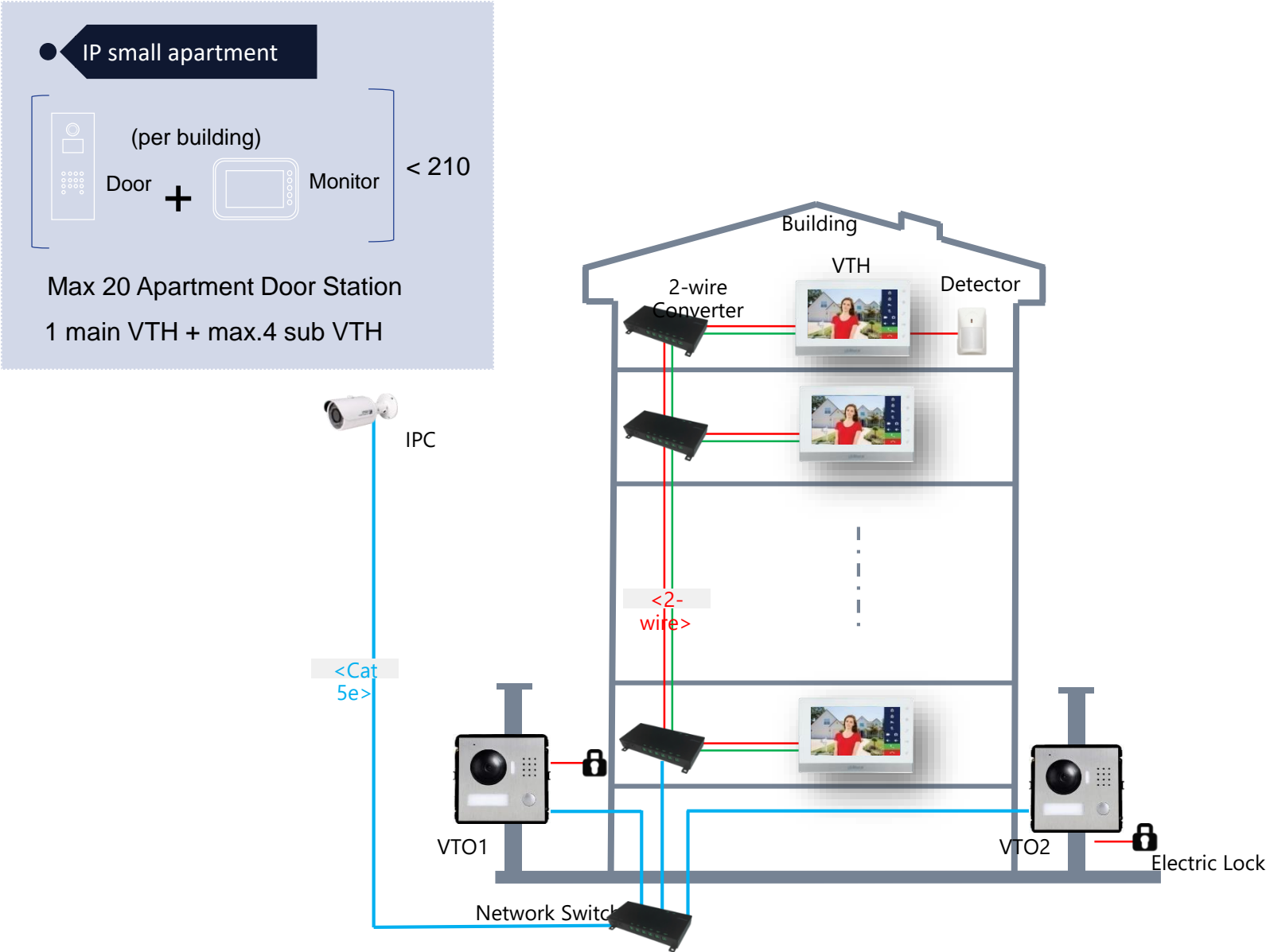
Most new apartments are using IP solution



Without platform solution

- Use VTO as the SIP server;
- Platform is not needed, cost effective;
- DMSS Mobile app can answer call anywhere;
- Video surveillance and alarm integrated;

2-Wire Apartment Intercom Architecture



Old analog project update to IP solution

————— 2-Wire in different system
————— 2-Wire in different system

Analog	IP
Analog signal	IP signal PoE

System Highlights

Powerful system capacity



HD, wide view angle for door station

Other Company



Galaxy



Best audio



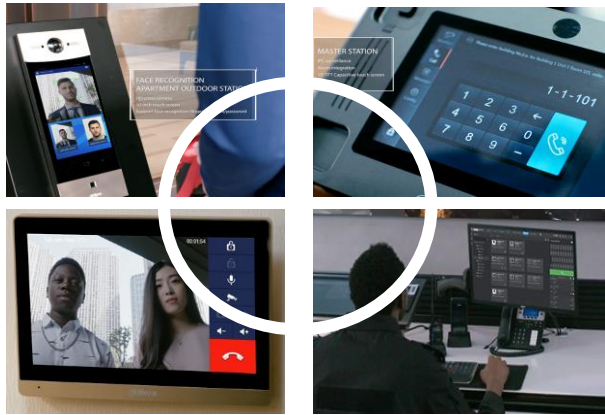
Remote unlock



Video integration

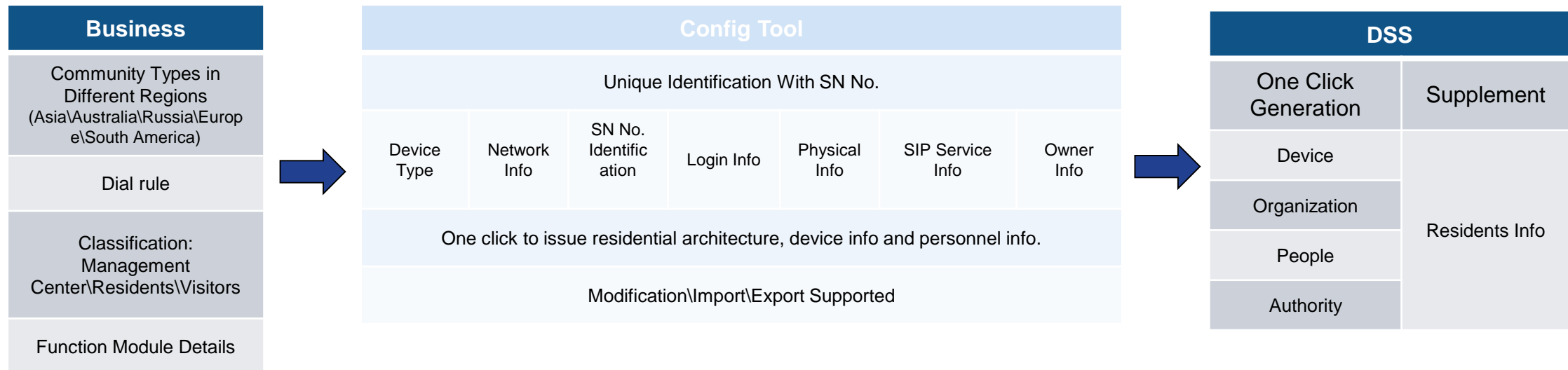


Intercom in any devices

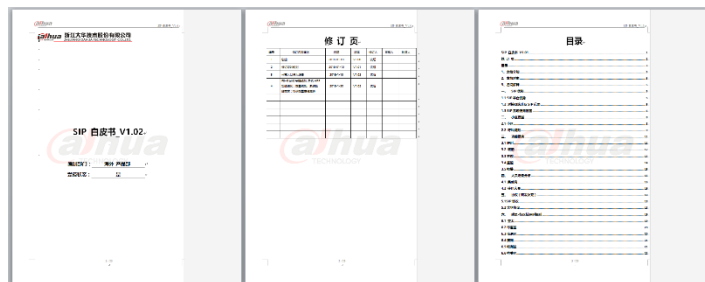


Centralized Configuration Tool

- Simplify SI' s work to create more value



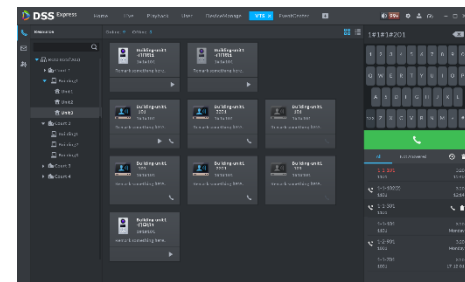
- **Make technical white paper and community model based on global communities requirements.**
- **Add devices using Excel table according to SN No.**
- **Import Excel to Express for devices adding, personnel info creation and intercom authority**



SIP White Paper

[illegible]

Configuration Table



DSS

/02

Villa Intercom Solution

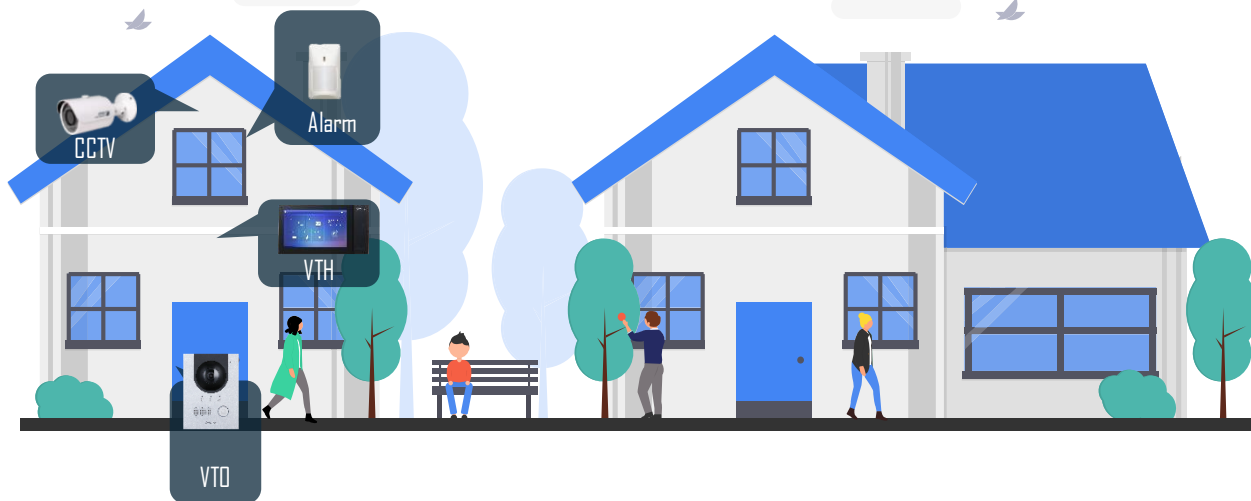
IP and analog solution

Mobile app management

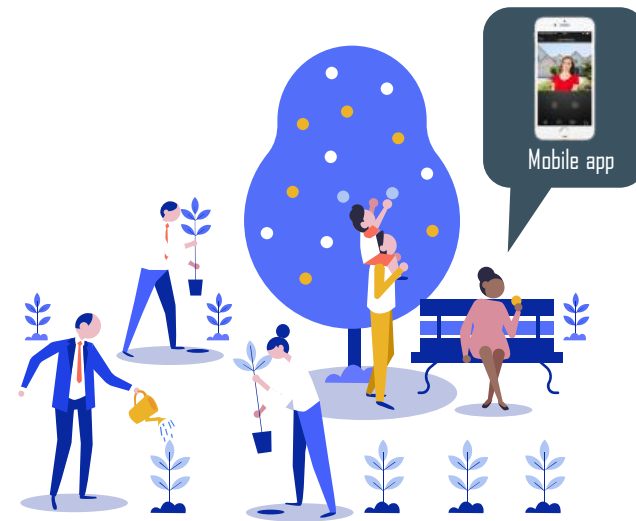


Villa Scenario

- 1 Visitors call the proprietor and make audio & video intercom;
Door release via indoor monitor;



- 2 Receive the call remotely;
Door release via mobile app;
Alarm push;



Operation Flow

- Multiple door-release ways: card, password ;
- Receive the call and unlock via the VTH;
- Receive alarm information on VTH or mobile app;
- Preview IPC video on VTH;
- Mobile app: intercom, door release & alarm push;

Resident

Visitor

- Visitors call residents through the VTO;
- The resident answers and opens the door;

IP Villa System Architecture

● IP Villa System

(per building)

○

○

20 Door +

□

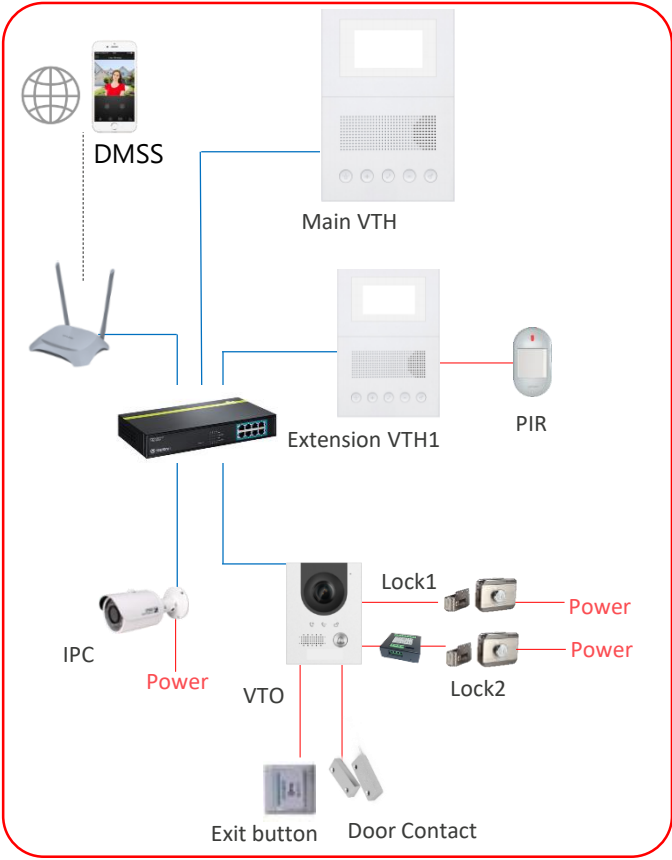
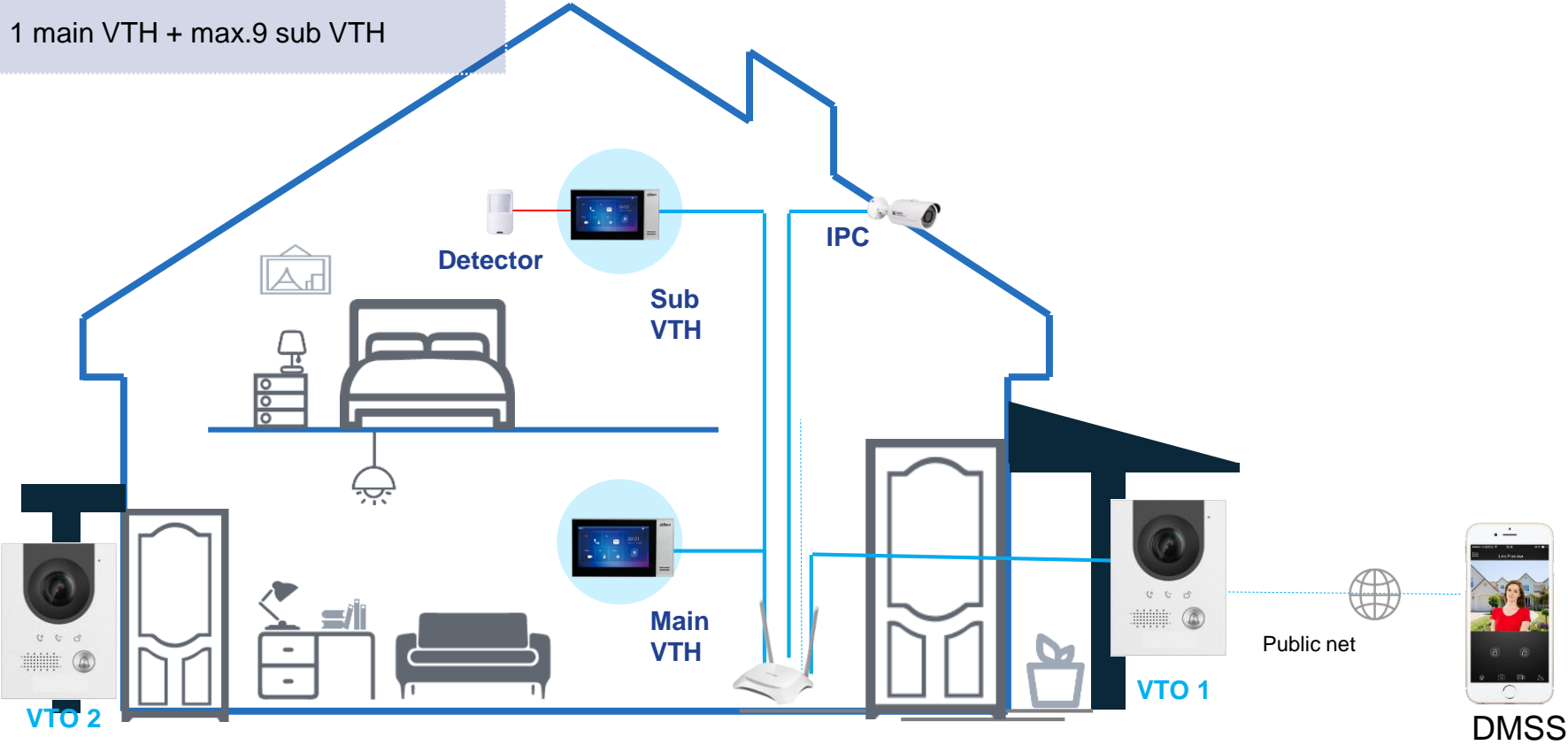
□

□

□

10 Monitor

1 main VTH + max.9 sub VTH

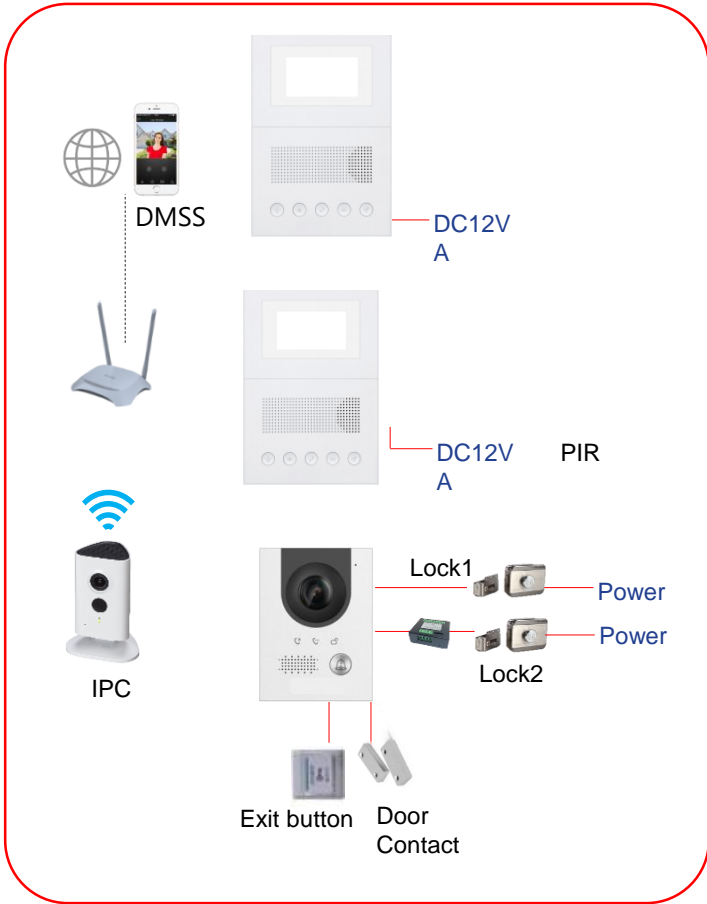


Wifi Villa System

(per building)

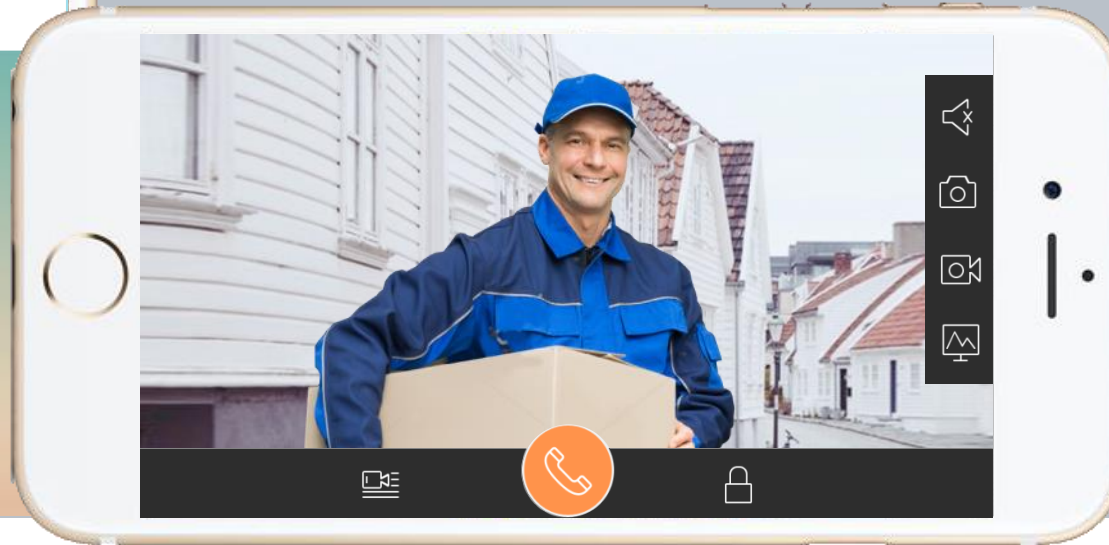
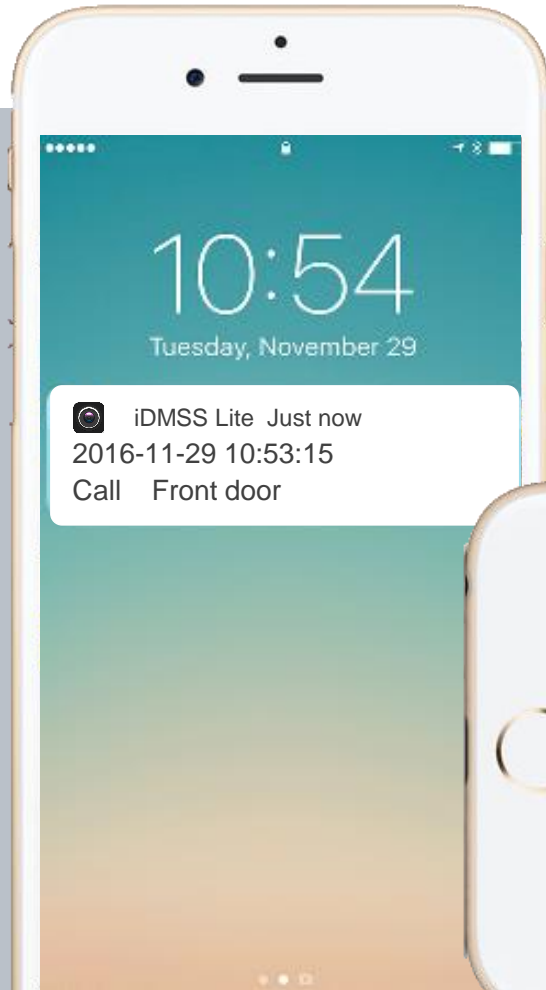
4 Door + 3 Monitor

1 main VTH + max.2 sub VTH



Mobile APP---DMSS

Remote intercom ,Remote door release





Thanks

Just SIP IT