



We reinvented...
the ACCESSIBLE WASHROOM
KIT

Our vision was to create a product that enhanced the user's experience, a kit that was simple and intuitive. Crafted and Engineered by experts in the Automatic Door industry

Today, we bring you the
BWC WASHROOM KIT

www.galaxysecurityinc.com

The background of the slide features a series of concentric, curved lines in a light gray color, creating a sense of motion or a stylized architectural design. These lines are more prominent on the left side and fade towards the right.

What do you need for an ACCESSIBLE WASHROOM?

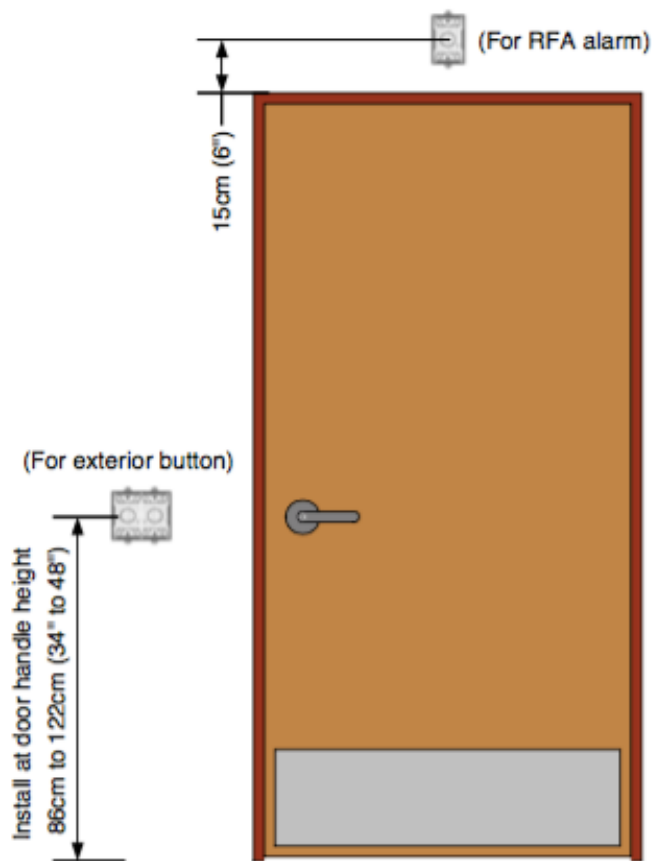
- AN AUTOMATIC DOOR OPERATOR
- ELECTRIC STRIKE
- INTERIOR & EXTERIOR ACCESSIBLE
BUTTONS WITH LIGHTS
- REQUEST FOR ASSISTANCE BUTTON
(WITH SIGNAGE)
- INTERIOR REQUEST FOR ASSISTANCE
(RFA) ALARM
- EXTERIOR RFA ALARM

EASY TO INSTALL & SIMPLE TO USE

WHY THE BWCO1 WASHROOM KIT

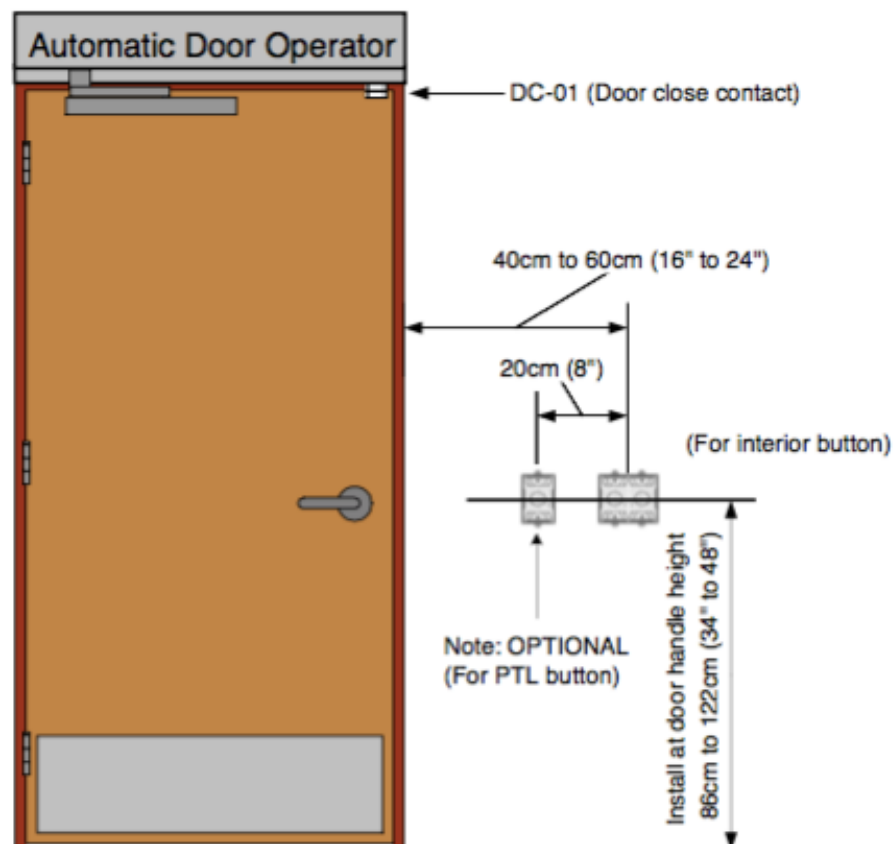
- **SIMPLE TO INSTALL – ALL MAJOR COMPONENTS CONNECTED TO A 2-WIRE NON-POLARIZED BUS**
- **COMBINED FUNCTION, LESS ELECTRICAL BOXES NEEDED**
- **MAIN CONTROLLER INCLUDES A 12 & 24 VOLT POWER SUPPLY**
- **WE INTRODUCED THE AUTOMATIC LOCK – NO PUSH TO LOCK (PL) BUTTON REQUIRED**
- **FEATURE RICH ...**

(Example: In-swing door)

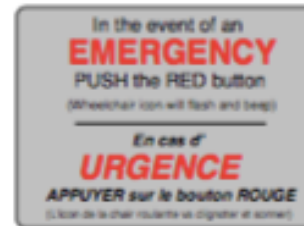
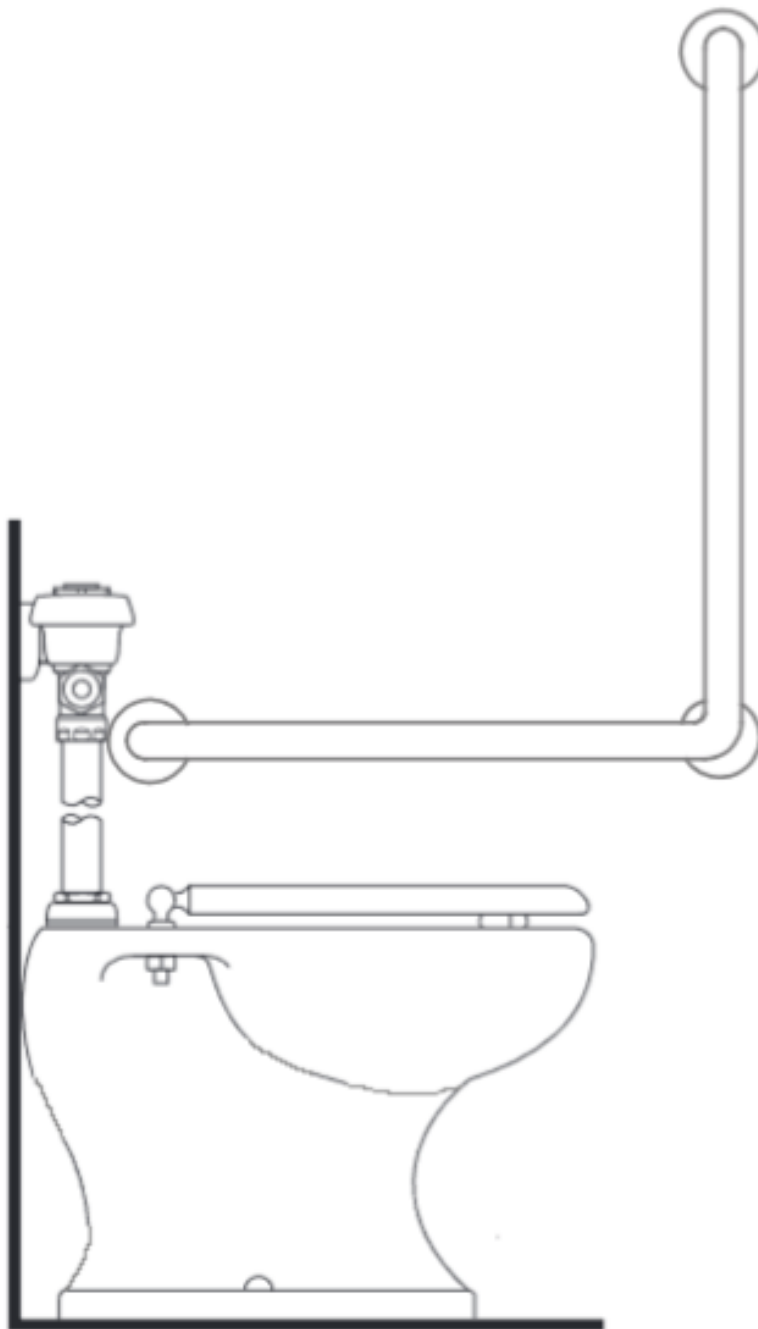


(Exterior side)

Note: When planning the button locations, allow for enough space between the button and the door edge on the swing side, so that the door can open without coming in contact with a wheelchair user.



(Interior side)



← RFA sign

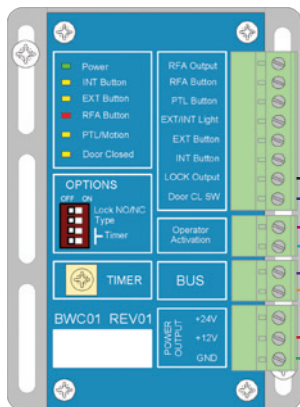


← RFA button

BWC01-01

Control Panel

- Power supply included (+12V and +24V)
- Inputs and outputs for old installations
- RFA remote alarm output
- Visual indicators
- No mechanical relays
- Reversible lock output
- Simplified connections (Two wire BUS)
- Small (Fits in automatic door operator)



NORTON 5610

Automatic Door Operator \$899

Not included in kit (Sold separately)



DC01

Door close switch



GX-KL102

Electric Lock \$89

Not included in kit (Sold separately)



Wiring example for 12VDC strike



BWC01-EXT-SW-01

Exterior light/activation

Touchless Button

- Touchless activation button
- Handicap icon illuminated
Green when washroom is available
Red when occupied
- Lock icon visible when door is locked
- Selectable beeper
- Simplified connections (Two wire BUS)
- Fits on a 2X4 or 4X4 electrical box
- Low profile 25mm

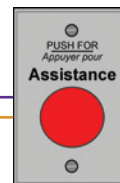


BWC01-INT-SW-01

Interior light/activation

Touchless Button

- Touchless activation button
- Selectable automatic lock (On-board motion sensor)
- Handicap icon illuminated
Green - available Red - occupied
- Lock icon visible when door is locked
- Selectable beeper
- Interior RFA Alarm (Light and sound)
- Simplified connections (Two wire BUS)
- Fits on a 2X4 or 4X4 electrical box
- Low profile 25mm



BWC01-RFA-SW-CDN-01

RFA (Request for assistance) switch

- Push/Pull switch
- Fits on a 2X4 electrical box
- Simplified connections (Two wire BUS)



BWC01-PTL-SW-CDN-01

PTL (Push to lock) switch (Optional)

- Install if motion in interior switch is disabled
 - Push spring return switch
 - Fits on a 2X4 electrical box
 - Simplified connections (Two wire BUS)
- Not included in kit (Sold separately)



BWC01-RFA-AL-CDN-01

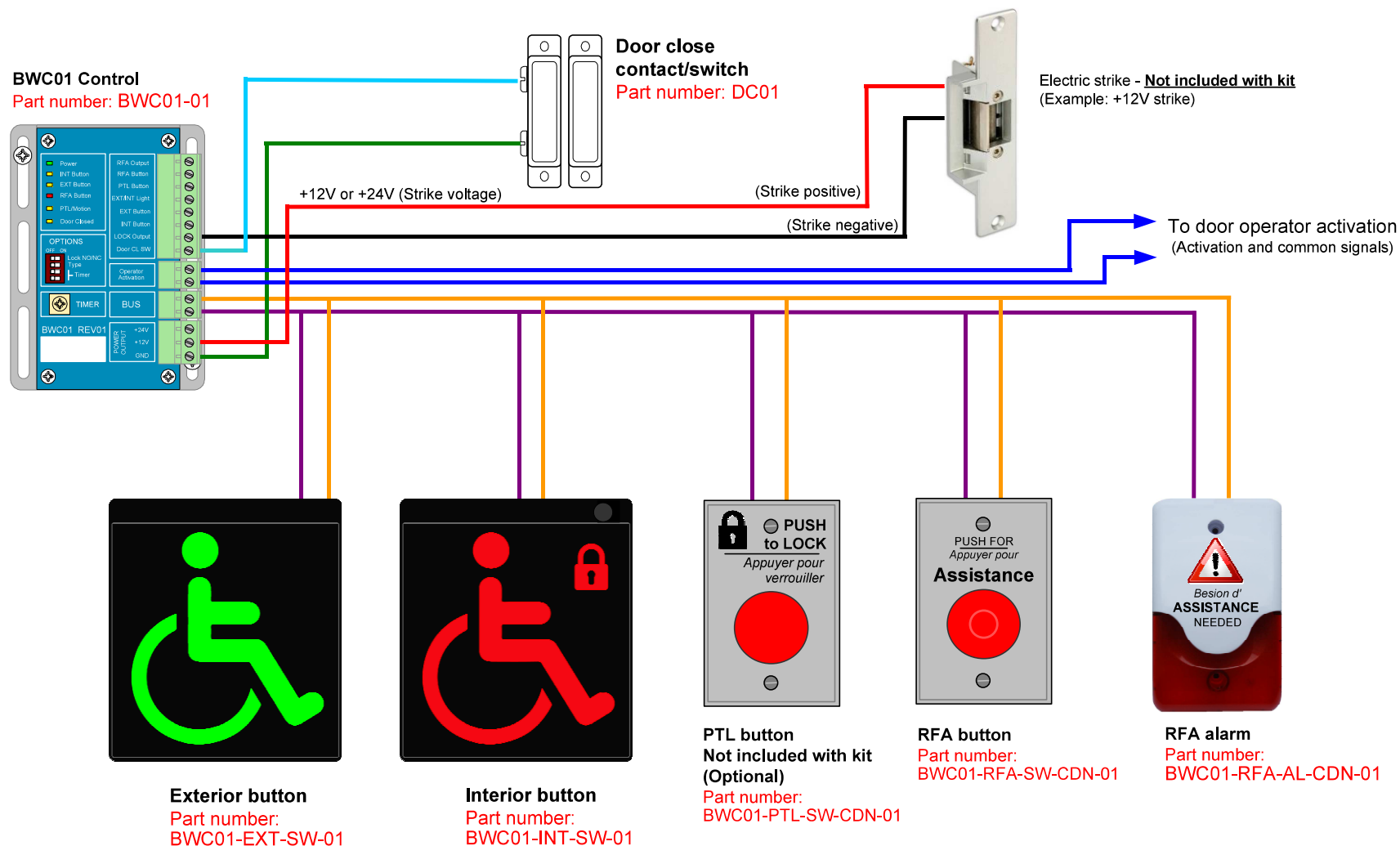
RFA (Request for assistance) alarm

- Light and sound
- Selectable steady or flash function for lights
- Fits on a 2X4 electrical box
- Simplified connections (Two wire BUS)

BWC01 - Accessible Washroom Kit (Wiring diagram)

* Pictures are not to scale

** Patent pending

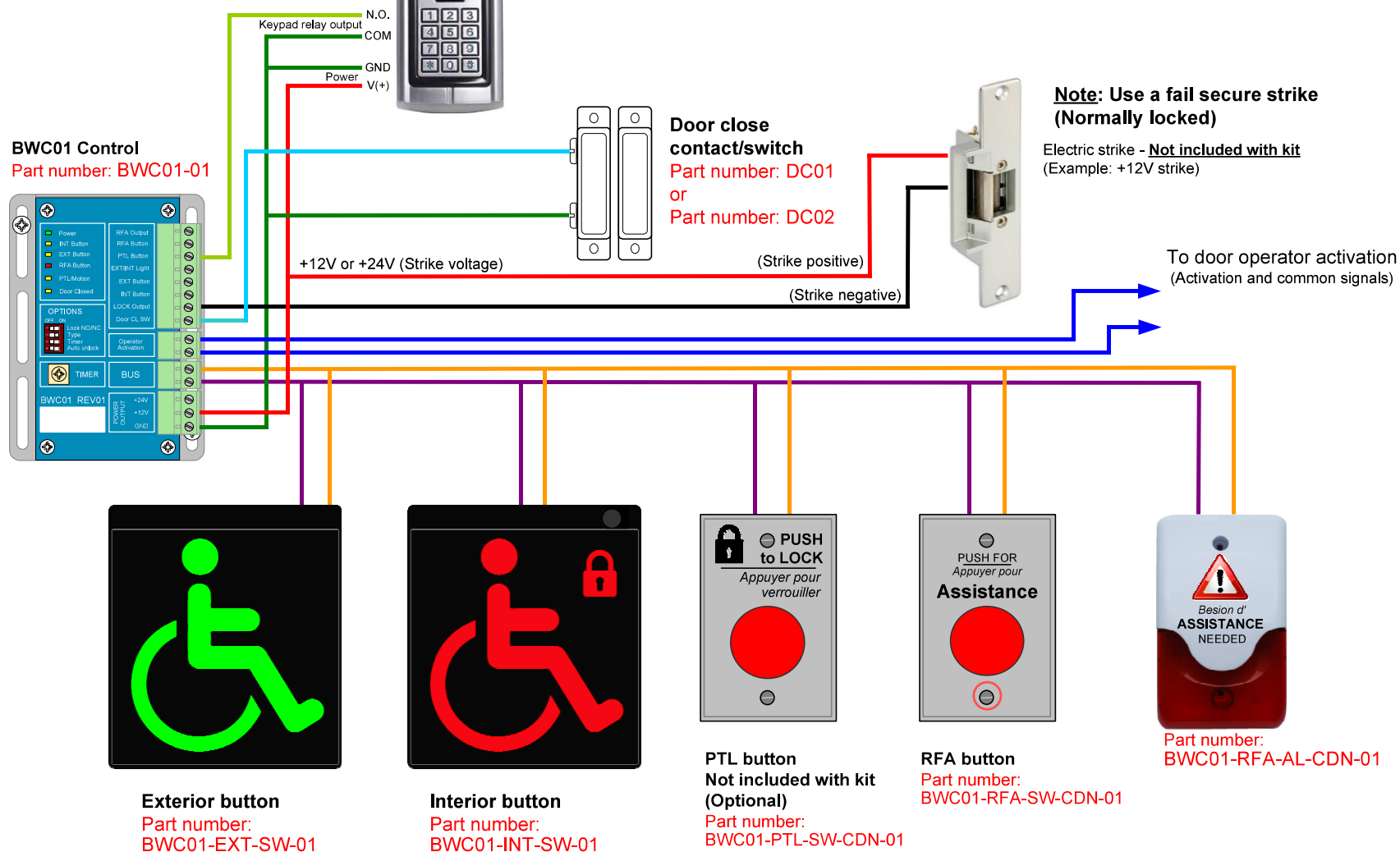


BWC01 - Accessible Washroom Kit, Normally locked (Wiring diagram)

* Pictures are not to scale

** Patent pending

Switch #2 to "ON" position
(Washroom type: Normally locked)



A red speech bubble graphic with a white outline, containing the text 'OTHER GREAT FEATURES'. The bubble has a tail pointing downwards and to the right.

OTHER GREAT FEATURES

- **GO SILENT ALARM**
- **TEMPERED GLASS**
- **BACK PLATE**
- **SIGNS / 3M ADHESIVE TAPE**