

Galaxy[®]

Galaxy Hunter 4MP Fixed-focal Floodlight Network Camera



IPC-L46N-CAN

CONTENTS

01

Product Overview

Overview

02

Floodlight Introduction

Floodlight Brightness

Floodlight Mode

03

Key Features

Track & Follow

Dual-Band Wi-Fi

Active alarm

Real-time communication

Optional PIR zones

Easy installation & operation

04

Scenarios & Product

Typical Scenarios

Structure Details

NVR & Software Firmware Version

Product Information

Product Overview — Floodlight Camera IPC-L46N-CAN



DUAL-BAND WIFI ENABLE

2.4GHz & 5GHz provide greater wireless bandwidth and more flexibility



HUMAN/VEHICLE DETECTION

Human and vehicle detection to reduce false alerts



SMART FLOODLIGHT

Adjustable color temperature, brightness, and floodlight modes



ACTIVE ALARM

Deter unwanted visitors with a built-in 110dB siren



LOCAL STORAGE

Micro SD support up to 256 GB



IP65

IP65 weather proof, high reliability

- ✓ Built-in **110dB siren**, supports active alarm;
- ✓ The built-in dual floodlights can switch between warm and cool color temperature and have **4 floodlights modes**;
- ✓ **Built-in microphone and speaker** for real-time communication;
- ✓ **100–240 VAC power** supply, suitable for household demand, support stronger light output;
- ✓ **Dual-band 2.4 GHz and 5 GHz Wi-Fi** options, IEEE802.11a/b/g/n/ac;
- ✓ **32GB pre-installed SD card**
- ✓ Detects humans, vehicles and animals to reduce the occurrence of false alarms

CONTENTS

01

Product Overview

Overview

02

Floodlight Introduction

Floodlight Brightness

Floodlight Mode

03

Key Features

Track & Follow

Dual-Band Wi-Fi

Active alarm

Real-time communication

Optional PIR zones

Easy installation & operation

04

Scenarios & Product

Typical Scenarios

Structure Details

NVR & Software Firmware Version

Product Information

Floodlight Introduction



- ✓ Floodlight Camera IPC-L46N-CAN supports adjustable floodlights, brightness up to **2400 lumens**, so you can identify people, cars and more at any hours.
- ✓ **3000K warm light & 6000K cool light** can be switched to meet different needs.



Warm light



Cool light

Floodlight Introduction



Floodlight Camera support 4 different lighting modes:

Motion Activate Mode

- The light turns on automatically when camera detects motion
- It turns off automatically after the designated duration



Manual Mode

- The users can turn on the light in the preview interface
- The light is always on unless you manually turn it off



Schedule Mode

- The lights will automatically activate during the preset days and times



PIR Activation Mode

- The light turns on automatically when PIR detector detects an object
- It turns off automatically after the designated duration



CONTENTS

01

Product Overview

Overview

02

Floodlight Introduction

Floodlight Brightness

Floodlight Mode

03

Key Features

Track & Follow

Dual-Band Wi-Fi

Active alarm

Real-time communication

Optional PIR zones

Easy installation & operation

04

Scenarios & Product

Typical Scenarios

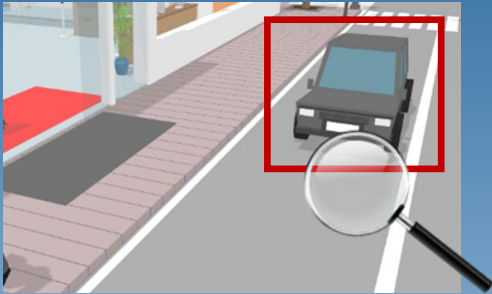
Structure Details

NVR & Software Firmware Version

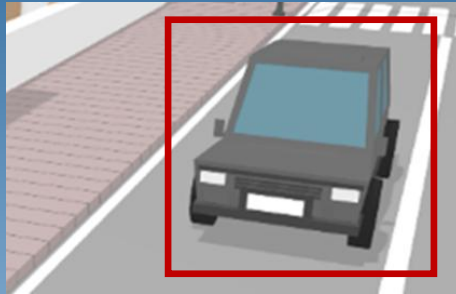
Product Information

Key Features

Track & Follow



detect moving object



follow to track

✓ Intelligent tracking:

- The camera can lock the moving object, zoom in and follow its motion track;
- When multiple moving objects appear in the picture, the tracking is stopped

- ✓ **Application:** Give the customers a better view and more details outside the house

2.4 G & 5 G Dual-Band Wi-Fi



✓ Improvement:

- It holds the advantages of good penetrability, small attenuation and long transmission distance;
- The addition of **5G** provides better transmission rate, stability and anti-interference;

- ✓ **Application:** Realize preview, playback, turn on lights and other functions in a complex network environment

Key Features

Galaxy[®]

Active alarm



- ✓ **Active alarm:**
 - The camera's **110dB siren** enabled when motion is triggered
- ✓ **Application:**
 - It will send instant alerts to your smartphone whenever it detects motion, keeping you aware of what's going on at home from anywhere

Two-way talk



- ✓ **Two-way talk:**
 - Built-in microphone and speaker
- ✓ **Application:**
 - Allow you to interact with visitors or dissuade unwelcome guests

Key Features



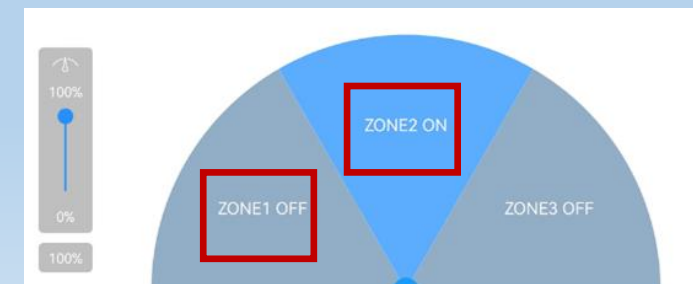
Optional PIR zones

PIR Detector:

- The camera has PIR sensor which is a passive infrared sensor used to detect motion
- When a person walks into the detection area of a passive sensor, it detects heat from the person and triggers an alarm or turns on the light
- This camera has three PIR zones, each is about 90 degrees, each zone can be opened and closed independently on DMSS

Application:

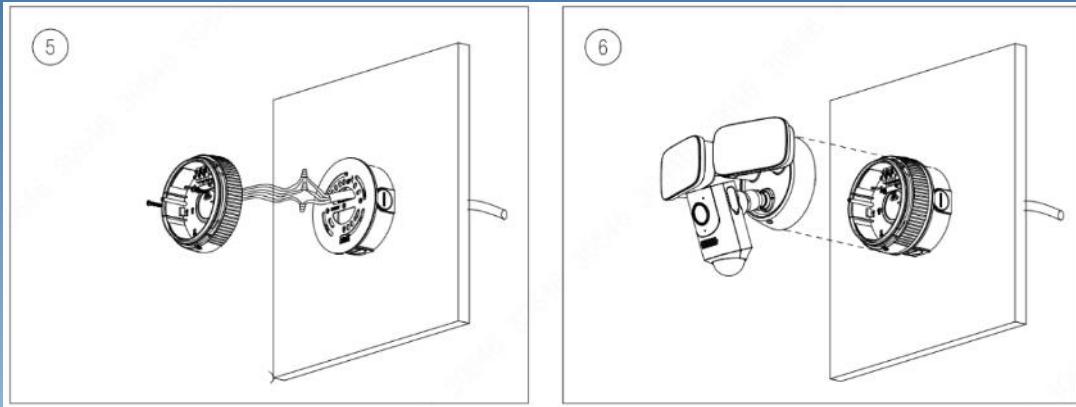
- 270-degree PIR sensor meet the individual lighting needs of customers
- The sensing area of each zone can be adjusted to respect the private space, avoid false alarm beyond the zones



Key Features

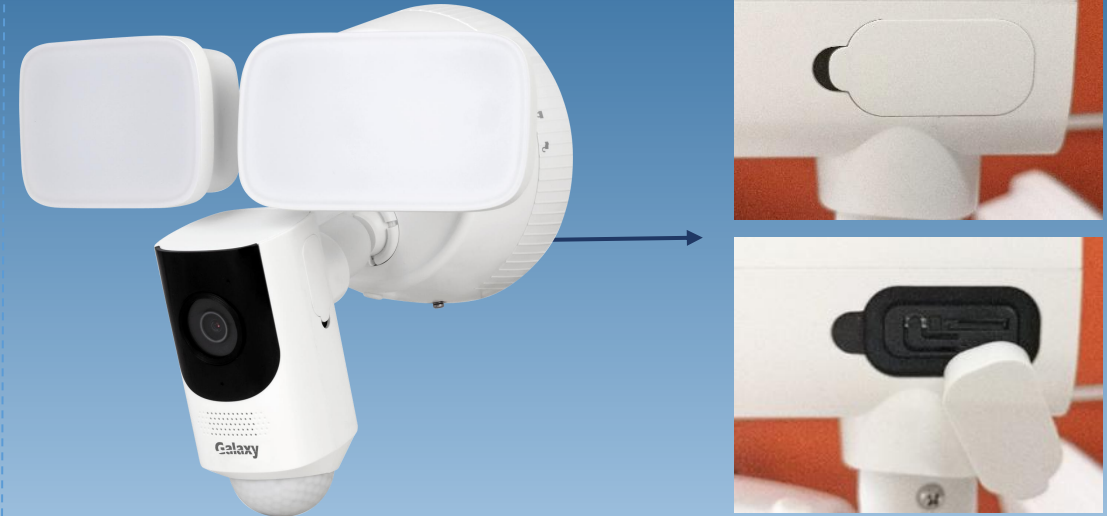
Galaxy[®]

Easy installation



- ✓ Connect the quick mounting base first, and then clamp the equipment on the base.
- ✓ The quick mounting base is light and easy to operate at high place

Easy operation



- ✓ Use two-color injection molding
- ✓ No screw fixation, convenient disassembly and installation
- ✓ Reliable waterproof and dustproof performance

CONTENTS

01

Product Overview

Overview

02

Floodlight Introduction

Floodlight Brightness

Floodlight Mode

03

Key Features

Track & Follow

Dual-Band Wi-Fi

Active alarm

Real-time communication

Optional PIR zones

Easy installation & operation

04

Scenarios & Product

Typical Scenarios

Structure Details

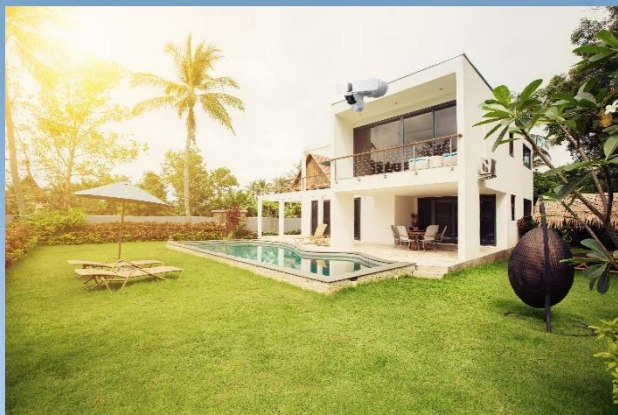
NVR & Software Firmware Version

Product Information

Typical Scenarios



Floodlight Camera IPC-L46N-CAN not only can be used for monitoring, but also can be used as a floodlight. It is used for places that need to be monitored and need illumination, such as residential houses, driveway , doorway and so on.



Residential house

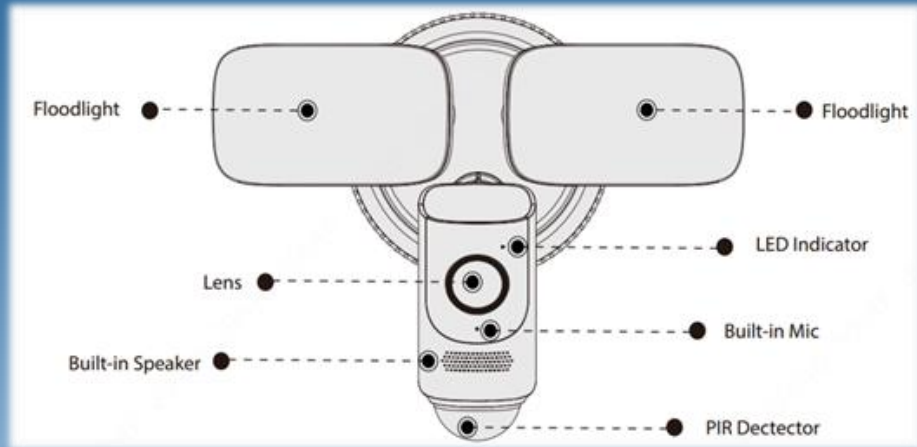


Driveway

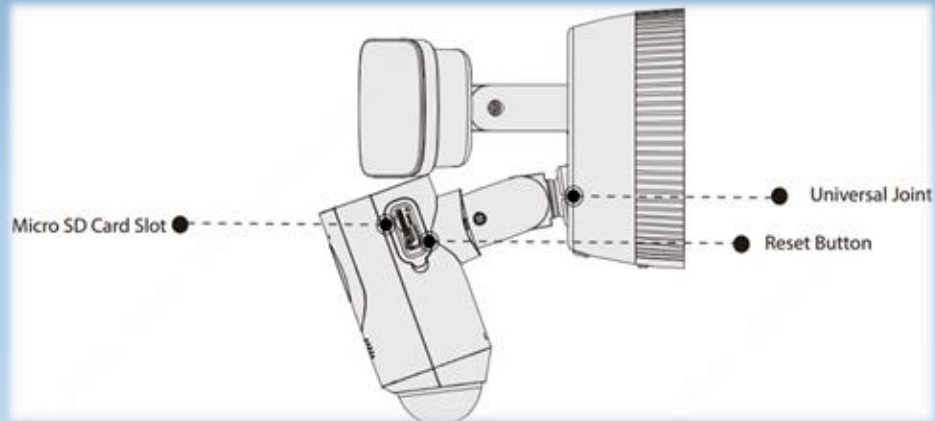


Doorway

Structure Details



- ✓ **Appearance:** Streamlined design
- ✓ **Floodlight:** Support cool & warm color temperature,
Floodlight brightness 1500 lumens—2400 lumens
- ✓ **Installation:** Quick installation base offers easy installation
- ✓ **Dimensions:** 300mm (L) x 200mm (W) x 228mm (H),
Easy to transport and cost saving
- ✓ **Universal Joint:** Offers multi-angle rotation and wider coverage



Galaxy[®]

「 Clear Vision, Safer World 」